

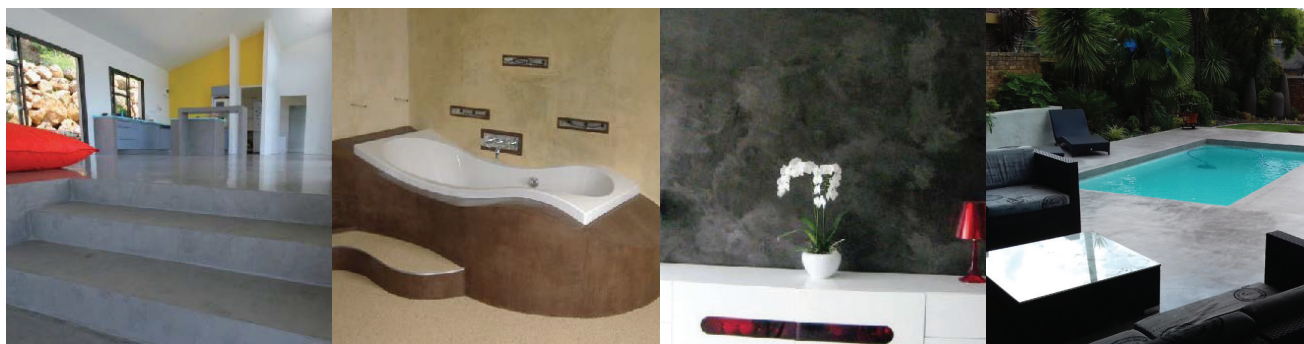


tradition • innovation • quality

a.b.e.® Construction Chemicals

CHRYSO® Béton Ciré Grip

USED IN DECORATIVE CONCRETE SYSTEMS



DESCRIPTION

CHRYSO® Béton Ciré Grip is a blend of exclusive selected dry powders containing Portland cement, minerals and additives.

CHRYSO® Béton Ciré Grip is a polymer modified cementitious base coating which could be projected with a spray hopper gun or applied by trowel to obtain a finish required. **CHRYSO® Béton Ciré Grip** is also used to smooth out floors that have blowholes or surface irregularities.

This technique indeed allows covering large surfaces in a short time, approximately 200 m² per day on an average.

The system may be pigmented in order to obtain different colours to compliment various finishes.

We thus obtain different finishes: orange skin, crushed with the help of a trowel (glazed appearance).

CHRYSO® Béton Ciré Grip may be applied beneath **CHRYSO® Béton Ciré Finishing** where required.

Searching for a modern and trendy decorative look, the **CHRYSO® Béton Ciré Grip** allows for a customized solution.

USES

- Smoothing of floors that have blowholes and surface irregularities
- Paths & sidewalks
- Patio's
- Framed/stencil patterns
- Commercial building centres
- Domestic areas
- Sprayed applications
- On new and old sound concrete slabs or cement screeds

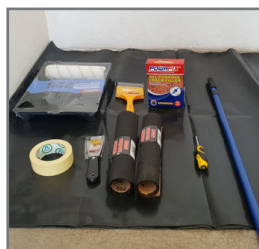
ADVANTAGES

- Easy to apply
- Aesthetic range of finishes
- Wide range of architectural features
- Warm earth colour range

- UV stable, stain resistant subject to sealer selection
- Quick drying, reduces turn-around time
- Excellent mechanical properties
- Excellent adhesion
- Excellent abrasion properties
- May be applied in interior and exterior applications

TYPICAL PROPERTIES

Properties	CHRYSO® Béton Ciré Grip
Liquid: Powder Ratio	0.270 ml of CHRYSO® Polymer 21 added to 1 kg CHRYSO® Béton Ciré Grip powder
Flow on Flow Table (BS EN 1015-3)	190 mm No Dropping 250 mm at 25 drops
Wet density	1900 kg/m ³
Approximate Yield	25 kg powder + 6.8 litres polymer = 16.7 litres i.e. 16.7 m ² at 1 mm thick



Tools for primer



Tools for mixing and application



Helical Stirrer

SURFACE PREPARATION

All surfaces are to be smooth clean and sound, free of oil, loose paint and contaminants that may impair the bonding properties of the product.

The surfaces are to be ground to a smooth finish and all dust and dirt vacuumed off.

Any sharp protruding points need to be ground off as these will reflect through the product due to the product application thicknesses being thin.

MIX COMPONENTS

CHRYSO® Béton Ciré Grip must be mixed with **CHRYSO Polymer 21**. **CHRYSO® Béton Ciré Grip** can be coloured by adding micronized iron oxide pigments but not exceeding 5% of the powder component by weight.

It is recommended to air the powder before mixing.

MIX PROPORTIONS

Add 270 ml of **CHRYSO Polymer 21** to 1 kg **CHRYSO® Béton Ciré Grip** powder or 6.8 litres of **CHRYSO Polymer 21** to 25 kg of **CHRYSO® Béton Ciré Grip** powder.

Warning: When mixing, first pour the required quantity of **CHRYSO Polymer 21** into a clean mixing vessel, whilst stirring slowly add the powder to the liquid and thoroughly mix until a smooth lump free homogenous mix is obtained. Use a helical type mortar mixer.

APPLICATION GUIDE

PRIMING

Apply **CHRYSO Polymer 21** to the surface by brush or short nap roller and allow to dry. Coverage approximately 7 m²/litre, two coats may be required subject to the surface profile and porosity.

Do not allow ponding or pooling of the primer.

Should **CHRYSO® Béton Ciré Grip** be required as the first layer to improve the surface profile before applying **CHRYSO® Béton Ciré Finishing**, then the surface must be primed with **CHRYSO Polymer 21** before applying the **CHRYSO® Béton Ciré Finishing**.

APPLICATION

First start by wetting substrate using a micro-fibre mop.

To the prepared, SSD surface (surface saturated dry - having no free water on the surface) apply **CHRYSO® Béton Ciré Grip** and finish off as required.

The total application thickness must not exceed 2 mm, should greater thicknesses be required then multiple layers may be applied after light sanding and cleaning, the preceding layers are to be dry.

Should a mixed batch in the mixing vessel dry do not re-temper, the mix rather discard it and prepare a fresh batch.

Applying the **CHRYSO® Béton Ciré Grip** can be undertaken by using different techniques typically:

1. Metal Edge squeegee: ideal to treat wide surfaces for the first coat.
2. Trowel: This technique enables a burnished surface effect.
3. Magic Trowel: The extra-smoothing coating trowel will reduce a burnished surface effect. However, the product consumption may be higher.
4. Spray Application: For spray applications, typically using a spray hopper gun, you may need to add additional **CHRYSO® Polymer 21** to the **CHRYSO® Béton Ciré Grip** powder to obtain the required consistency. The amount to be added must be tested as this will be a function of air pressure, nozzle size and the finish required.

SEALING

A choice of sealers offered, water based, solvent borne and 2K systems.

The choice of sealer will depend upon the end use of application and environment the product is exposed to. This may include general or chemical resistant properties required of the finish. Always do a test sample of the sealer to ascertain the outcome as solvent borne sealers generally offer a darker finish opposed to water borne sealers. Sealer types are indicated under MAINTENANCE below.

COLOURS – ONLY USE MICRONIZED PIGMENTS

Standard available colours:

Silica, Dune, Pebble, Cobble, Sandstone, Terracotta, Limestone and Ash.

Other colours may be added to achieve the desired outcome, do not exceed 5% by weight of the **CHRYSO® Béton Ciré Grip** powder content. Only use micronized pigments.

APPROXIMATE COVERAGE (MIXED PRODUCT)

CHRYSO® Béton Ciré Grip – 800 g/m² (+0.42 mm) to a maximum of 4.0 kg/m² (±2 mm) thick.

Application rates may vary subject to surface profile, irregularities and absorption rates.

MAINTENANCE

CHRYSO® Béton Ciré Grip surfaces must be coated with an appropriate sealer. The condition of the sealer is to be examined periodically in order to determine whether there is any need for an additional wax or sealer coating. If the site is regularly cleaned, there might not be any need for a new coat of sealer for several years.

Refer to the sealer product data sheets, typically **CHRYSO® FiniSol Brut**, **CHRYSO® FiniSol Perle**, **abe.® cote PUD** clear, matt or gloss and **abe.® cote 222 acrylic gloss sealer**. Consult your local CHRYSO/a.b.e.® representative for information on other sealers if required.

HANDLING AND STORAGE

CHRYSO® Béton Ciré Finishing must be stored in a cool dry place. Lids of buckets must be tightly closed. **CHRYSO® Béton Ciré Finishing** has 12 months shelf life provided the product is sealed and protected from humidity.

CLEANING OF EQUIPMENT

Tools, brushes and mixing equipment should be cleaned with water immediately after use and before material has set. Hardened material can only be removed by mechanical means.

PROTECTION ON COMPLETION

Ensure the **CHRYSO® Béton Ciré Grip** is not subjected to rain or draughts during the first 24 hours of curing as this may lead to dissolving of the polymer leaving white marks and/or cracking and crazing.

Tape up doorways with polythene if necessary to prevent air movement during application.

Subsequently ensure the room has sufficient ventilation to allow the overlay to dry.

Ensure adequate protection from other trades and traffic after installation, the surface must be free of dirt and dust before applying the screed, prevent contamination by following trades e.g. plastering, including water spillage.

HEALTH AND SAFETY

Keep out of reach of children. Avoid contact with skin and eyes.

Wear appropriate protective equipment and clothing.

Product safety information required for safe use is not included. Before handling, read product and safety data sheets and container labels for safe use, physical and health hazard information. For more information, please refer to the material safety data sheet.

PACKAGING

CHRYSO® Béton Ciré Grip is available in plastic buckets:
5 kg (code: 91480 005) and 25 kg (code: 91480 025)

CHRYSO® Polymer 21 is available in plastic jerry cans

5 litre (code: 91404 005) and 25 litre (code: 91404 005)

WARNING

CHRYSO® Béton Ciré Grip is meant for use by trained and experienced professionals. Manufacturer's instructions must be strictly followed. Use of product on any worksite lies outside manufacturer's control and responsibility. Should a product however seem to be defective in spite of every care taken by the manufacturer, the manufacturer will only be held responsible for the cost of replacement of defective product. It is the responsibility of the person applying the product to determine suitability of use of product prior to application and to bear any risks sustained from any erroneous prior analysis or use. Before proceeding to any application, please refer to the systems and process technical manual.

IMPORTANT NOTE

This data sheet is issued as a guide to the use of the product(s) concerned. Whilst **a.b.e.® Construction Chemicals** endeavours to ensure that any advice, recommendation, specification or information is accurate and correct, the company cannot – because **a.b.e.®** has no direct or continuous control over where and how **a.b.e.®** products are applied – accept any liability either directly or indirectly arising from the use of **a.b.e.®** products, whether or not in accordance with any advice, specification, recommendation, or information given by the company.

FURTHER INFORMATION

Where other products are to be used in conjunction with this material, the relevant technical data sheets should be consulted to determine total requirements. **a.b.e.® Construction Chemicals** has a wealth of technical and practical experience built up over years in the company's pursuit of excellence in flooring and concrete technology.



DATE UPDATED: 24/04/2019

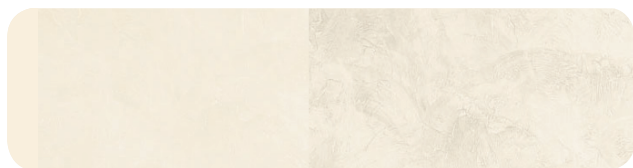
a.b.e.® is an ISO 9001:2015 registered company
Registration Number: 1982/005383/07
101 Main Reef Road, Boksburg North, 1459
PO Box 5100, Boksburg North, 1461

a.b.e.® Construction Chemicals (Pty) Ltd
is a CHRYSO Group Company

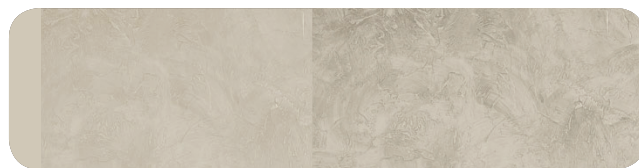
CHRYSO

CHRYSO® Bèton Cirè Grip COLOUR CHART

These colours are provided as a guidance only and exact colour matches will be dependent on the surface condition.



silica



dune



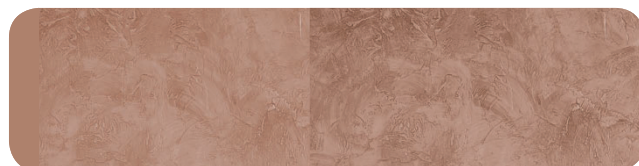
pebble



cobble



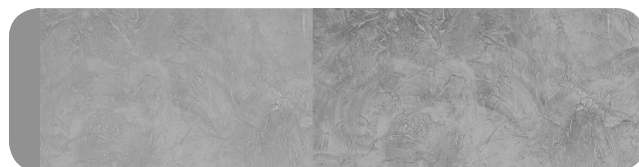
sandstone



terracotta



limestone



ash

DATE UPDATED: 24/04/2019

a.b.e.® is an ISO 9001:2015 registered company
Registration Number: 1982/005383/07
101 Main Reef Road, Boksburg North, 1459
PO Box 5100, Boksburg North, 1461

a.b.e.® Construction Chemicals (Pty) Ltd
is a CHRYSO Group Company

CHRYSO