

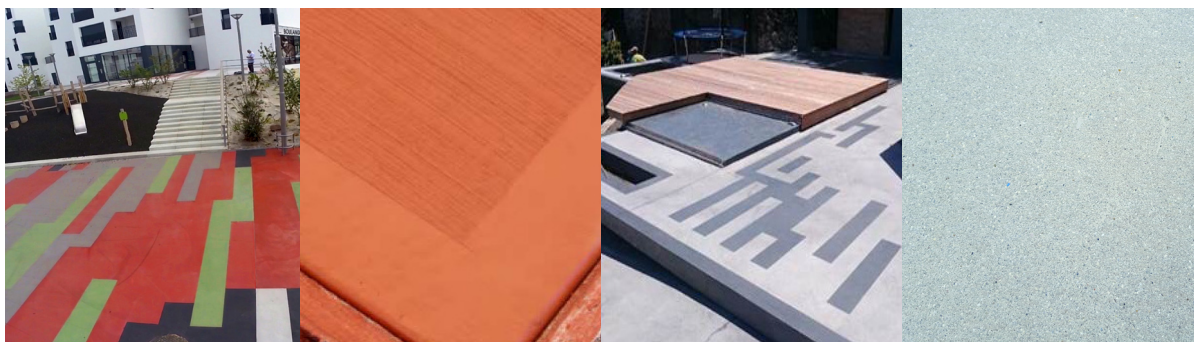


tradition • innovation • quality

a.b.e.® Construction Chemicals

CHRYSO® *Texture Top*

TEXTURED, DECORATIVE CEMENTITIOUS OVERLAY



DESCRIPTION

CHRYSO® Texture Top is blend of exclusive selected dry powders containing portland cement, minerals and additives. **CHRYSO® Texture Top** is a polymer modified cementitious base coating which could be projected with a spray hopper gun or applied by trowel to obtain a smooth finish or a textured finish using a broom or similar. This technique allows coverage of large surfaces in a short time, approximately 200 m² per day on average. The system may be pigmented in order to obtain different colours to compliment various finishes. We thus obtain different finishes: orange skin, crushed with the help of a trowel (glazed appearance). Searching for a modern and trendy decorative look, the **CHRYSO® Texture Top** allows for a customized solution.

USES

- Swimming pool decks
- Terraces
- Paths & sidewalks
- Driveways
- Patio's
- Framed/stencil patterns
- Commercial building centres
- Domestic areas
- Sprayed applications
- On new and old sound concrete slabs or cement screeds
- Exposed aggregate surface optional

ADVANTAGES

- Easy to apply
- Aesthetic range of finishes
- Exposed aggregate surface optional
- Wide range of architectural features
- Warm earth colour range
- UV stable
- Stain resistant subject to sealer selection
- Quick drying, reduces turn-around time
- Excellent mechanical properties

- Excellent adhesion
- Excellent abrasion properties
- May be used internally and externally

SURFACE PREPARATION

Ensure all surfaces are clean and sound, free of oil, loose paint and contaminants that may impair the bonding properties of the product.

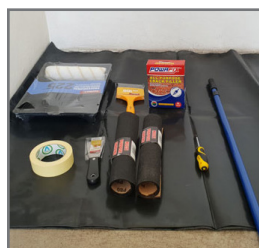
Ensure that surf aces are ground to a smooth finish and free of dust and dirt.

Any sharp protruding points need to be ground off as these will reflect through the product due to the product application thicknesses.

The surface needs to be pre-wetted to obtain a SSD condition (surface saturated dry, no free water present) prior to applying the product.

TYPICAL PROPERTIES

Properties	CHRYSO® Texture Top
Liquid: Powder Ratio	0.270 ml of Polymer 21 per 1 kg powder
Flow on Flow Table (BS EN 1015-3)	255 mm - No Dropping
Wet density	1927 kg/m ³
Approximate Yield	25 kg powder + 6.8 litres Polymer 21 = 16.5 litres i.e. 16 m ² at 1 mm thick



Tools for primer



Tools for mixing and application



Helical Stirrer

MIX COMPONENTS

CHRYSO® Texture Top must be mixed with **CHRYSO® Polymer 21**. **CHRYSO® Texture Top** can be coloured by adding micronized iron oxide pigments but not exceeding 5% of the powder component by weight.

It is recommended to air the powder before mixing.

MIX PROPORTIONS

Add 270 ml of **CHRYSO® Polymer 21** to 1 kg **CHRYSO® Texture Top** powder or 6.75 litres of **CHRYSO® Polymer 21** to 25 kg of **CHRYSO® Texture Top**.

Warning: When mixing, first pour 80% of **CHRYSO® Polymer 21** into a clean mixing vessel, whilst stirring, slowly add the **CHRYSO® Texture Top** powder to the mix and thoroughly mix until a smooth lump free homogenous mix is obtained, thereafter add the 20% balance of the **CHRYSO® Polymer 21** and thoroughly mix to obtain the required consistency. Use a helical type mortar mixer.

PRIMING

Apply **CHRYSO® Polymer 21** to the surface by brush or short nap roller and allow to dry. Coverage approximately 7 m²/litre, two coats may be required subject to the surface profile and porosity. Do not allow ponding or pooling of the primer.

APPLICATION GUIDE

First start by wetting substrate using a micro-fibre mop.

To the prepared, SSD (surface saturated dry - having no free water on the surface) surface apply the **CHRYSO® Texture Top** and finish off as required.

The total application thickness must not exceed 2 mm. Should greater thicknesses be required then multiple layers may be applied, after light sanding and cleaning, the preceding layers are to be dry.

Should a mixed batch in the mixing vessel dry do not re-temper the mix, it is recommended to discard and prepare a fresh batch.

Applying the **CHRYSO® Texture Top** can be undertaken by using different techniques:

1. Metal Edge squeegee: Ideal to treat wide surfaces for the first coat.
2. Trowel: This technique enables a burnished surface effect.
3. Magic Trowel: The extra-smoothing coating trowel will reduce a burnished surface effect. However, the product consumption may be higher. If required lightly spray **CHRYSO® Poly Densifier** over the surface to aid in finishing.
4. Spray application: For spray applications, typically using a spray hopper gun, you may need to add additional **CHRYSO® Polymer 21** to the **CHRYSO® Texture Top** to obtain the required consistency. The amount to be added must be tested as this will be a function of air pressure, nozzle size and finish required.

EXPOSED AGGREGATE FINISH

CHRYSO®Deco Wash Pico is a surface retarder that can be sprayed to lightly retard concrete surface setting. The finished look obtained has a "sanded" or "acid washed" aspect.

CHRYSO®Deco Wash Pico provides a qualitative and consistent finish. It must be uniformly sprayed onto the surface of the fresh concrete. Washing off is usually done within 24 hours after pouring.

Approximate consumption: 5 m² per litre. See **CHRYSO®Deco Wash Pico** data sheet for additional information.

SEALING

A choice of sealers offered, water based, solvent borne and 2K systems.

The choice of sealer will depend upon the end use of application and environment the product is exposed to. This may include general or chemical resistant properties required of the finish. Always do a test sample of the sealer to ascertain the outcome as solvent borne sealers generally offer a darker finish opposed to a water borne sealer. Sealer types are indicated under MAINTENANCE below.

COLOURS - only use micronized pigments

Standard available colours:

Silica, Dune, Pebble, Cobble, Sandstone, Terracotta, Limestone and Ash.

Other colours may be added to achieve the desired outcome, do not exceed 5% by weight of the **CHRYSO® Texture Top** powder content.

APPROXIMATE COVERAGE (mixed product)

First coat: ± 850 g/m² (± 0.440 mm)

Second coat: ± 2 kg/m² (± 1.0 mm)

The second coat utilised for a broom or full spray cover.

The total maximum application rate must not exceed 2 mm.

Application rates may vary subject to surface profile, irregularities and absorption rates.

MAINTENANCE

CHRYSO® Texture Top surfaces must be coated with an appropriate sealer. The condition of sealer is to be examined periodically in order to determine whether there is any need for an additional wax or sealer coating. If the site is regularly cleaned, there might not be any need for a new coat of sealer for several years.

Refer to the sealer product data sheets typically **CHRYSO® FiniSol Brut** or **CHRYSO® FiniSol Perle**, **abe.®cote PUD** clear, matt or gloss, and **abe.®cote 222** acrylic gloss sealer. Consult your local **CHRYSO® / a.b.e.®** representative for information on other sealers if required.

HANDLING AND STORAGE

CHRYSO® Texture Top must be stored in a cool dry place. Lids of buckets must be tightly-closed. **CHRYSO® Texture Top** has 12 months shelf life provided the product is sealed and protected from humidity.

CLEANING OF EQUIPMENT

Tools, brushes and mixing equipment should be cleaned with water immediately after use and before material has set. Hardened material can only be removed by mechanical means.

PROTECTION ON COMPLETION

Ensure the **CHRYSO® Texture Top** is not subjected to rain or draughts during the first 24 hours of curing as this may lead to dissolving of the polymer leaving white marks and or cracking and crazing. Tape up doorways with polythene if necessary to prevent air movement during application.

Subsequently ensure the room has sufficient ventilation to allow the overlay to dry. Ensure adequate protection from other trades and traffic after installation, this includes the primer which must be free of dirt and dust before applying the overlay, prevent contamination by following trades e.g. plastering, including water spillage.

TEMPERATURE AND RELATIVE HUMIDITY

Internal air and floor temperatures must exceed + 5 °C.

HEALTH AND SAFETY

Keep out of reach of children.

Avoid contact with skin and eyes.

Wear appropriate protective equipment and clothing.

Product safety information required for safe use is not included. Before handling, read product and safety data sheets and container labels for safe use, physical and health hazard information. For more information, please refer to the material safety data sheet.

WARNING

CHRYSO® Texture Top is meant for use by trained and experienced professionals. Manufacturer's instructions must be strictly followed. Use of product on any worksite lies outside manufacturer's control and responsibility. Should a product however seem to be defective in spite of every care taken by the manufacturer, the manufacturer will only be held responsible for the cost of replacement of defective product. It is the responsibility of the person applying the product to determine suitability of use of the product prior to application and to bear any risks sustained from any erroneous prior analysis or use. Before proceeding to any application, please refer to the systems and process technical information.

PACKAGING

CHRYSO® Texture Top is available in plastic buckets:

5 kg (code: 91490 005) and

25 kg (code: 91490 025)

CHRYSO® Polymer 21 is available in plastic jerry cans

5 litre (code: 91405 005) and

25 litre (code: 91405 005)

IMPORTANT NOTE

This data sheet is issued as a guide to the use of the product(s) concerned. Whilst **a.b.e.® Construction Chemicals** endeavours to ensure that any advice, recommendation, specification or information is accurate and correct, the company cannot – because **a.b.e.®** has no direct or continuous control over where and how **a.b.e.®** products are applied – accept any liability either directly or indirectly arising from the use of **a.b.e.®** products, whether or not in accordance with any advice, specification, recommendation, or information given by the company.

FURTHER INFORMATION

Where other products are to be used in conjunction with this material, the relevant technical data sheets should be consulted to determine total requirements. **a.b.e.® Construction Chemicals** has a wealth of technical and practical experience built up over years in the company's pursuit of excellence in flooring and concrete technology.



DATE UPDATED: 23/04/2019

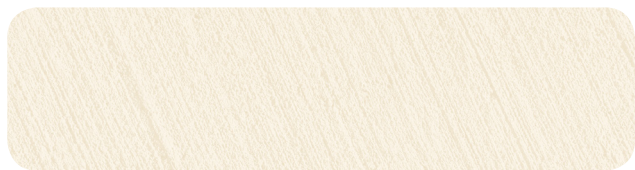
a.b.e.® is an ISO 9001:2015 registered company
Registration Number: 1982/005383/07
101 Main Reef Road, Boksburg North, 1459
PO Box 5100, Boksburg North, 1461

a.b.e.® Construction Chemicals (Pty) Ltd
is a CHRYSO Group Company

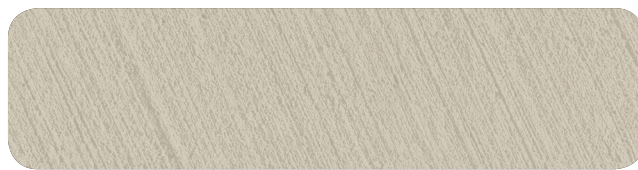
CHRYSO

CHRYSO® Texture Top COLOUR CHART

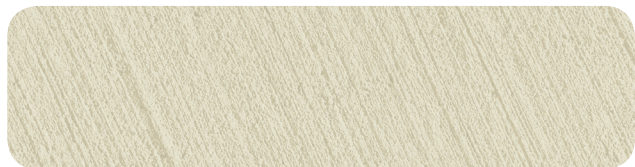
These colours are provided as a guidance only and exact colour matches will be dependent on the surface condition.



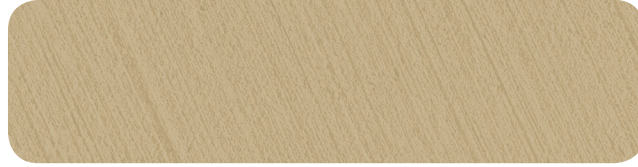
silica



dune



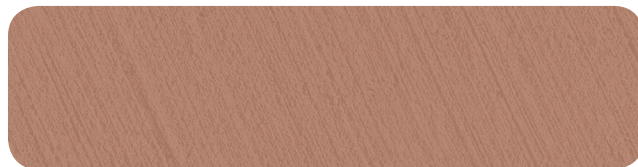
pebble



cobble



sandstone



terracotta



limestone



ash

DATE UPDATED: 23/04/2019